



Made in the USA

FINIAL OPTION:



1 1/2" (.070") w x 1 1/2" (.095") RAILS

2 1/2" x 2 1/2" (.125") POSTS

3 3/4" SPACING

1" x 1" (.062") PICKETS

1 3/8" SPACING



ALUMINUM FENCING

5000 SERIES

INDUSTRIAL ALUMINUM FENCE SYSTEMS

Regis Alum

Scale: 3/32" = 1"
Date: 5/12/06
5142 w/Short
As Shown:
3" x 96" 5142 w/Short

Post Size

96" Tall 2 1/2" x 2 1/2" x 11"

1 3/8" SPACING

1" x 1" PICK



Post Size
96" Tall 2 1/2" x 2 1/2" x 11"

LIFETIME LIMITED WARRANTY

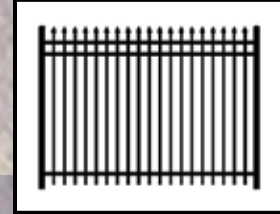
Regis Aluminum Fence

Scale: 3/32" = 1"
Date: 5/12/06
5240 w/Short Picket Option (96" Tall)
As Shown:
Drawn By: JDS
Revised:



5000 SERIES

- LIFETIME LIMITED WARRANTY* -

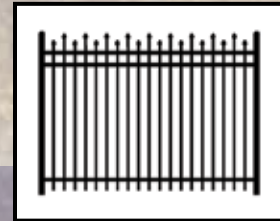


MODEL 5131

3 RAIL - WITH SPEARS

Heights: 48", 54", 60" & 72"

Length: 8' Sections

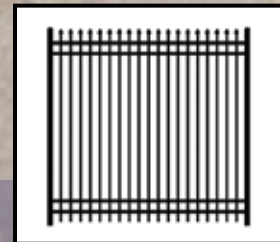


MODEL 5132

3 RAIL - WITH ALTERNATE SPEARS

Heights: 48", 54", 60" & 72"

Length: 8' Sections



MODEL 5141

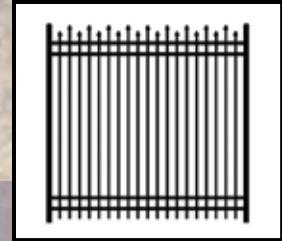
4 RAIL - WITH SPEARS

Heights: 84" & 96"

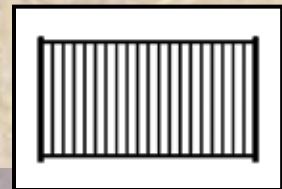
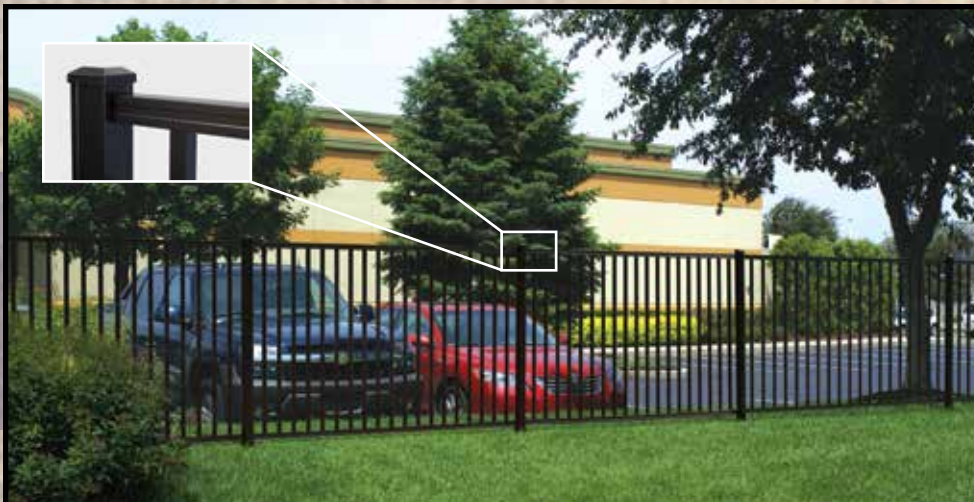
Length: 8' Sections

* 30-Year for Government, Municipalities and Corporations

INDUSTRIAL ALUMINUM FENCE SYSTEM

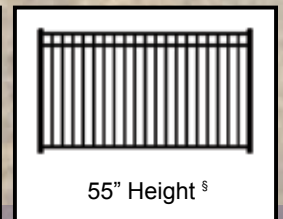
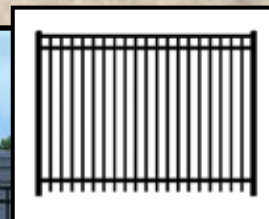


MODEL 5142
 4 RAIL - WITH ALTERNATE SPEARS
 Heights: 84" & 96"
 Length: 8' Sections



MODEL 5220[§]
 2 RAIL
 Height: 54"[§]
 Length: 8' Sections

[§] Meets National Pool Code Requirements for Height and Spacing. Check Local Pool Code Requirements.



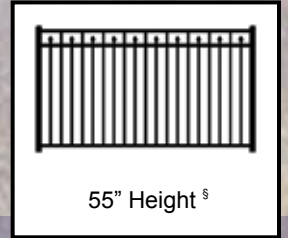
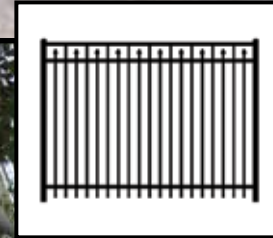
MODEL 5230
 3 RAIL - FLAT TOP
 Heights: 48", 55"[§], 60" & 72"
 Length: 8' Sections

[§] Meets National Pool Code Requirements for Height and Spacing. Check Local Pool Code Requirements.



5000 SERIES

- LIFETIME LIMITED WARRANTY* -



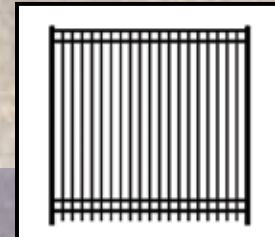
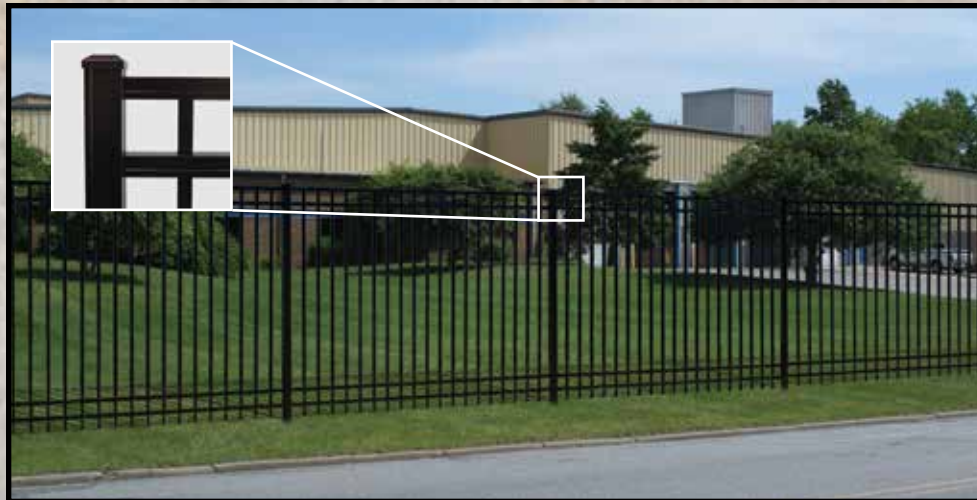
MODEL 5233

3 RAIL - FLAT TOP WITH ALTERNATE SPEARS

Heights: 48", 55"[§], 60" & 72"

Length: 8' Sections

[§] Meets National Pool Code Requirements for Height and Spacing. Check Local Pool Code Requirements.

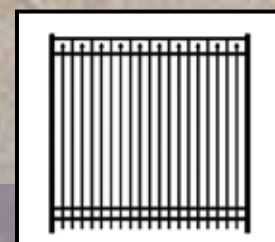


MODEL 5240

4 RAIL

Heights: 84" & 96"

Length: 8' Sections



MODEL 5243

4 RAIL - FLAT TOP WITH ALTERNATE SPEARS

Heights: 84" & 96"

Length: 8' Sections

* 30-Year for Government, Municipalities and Corporations

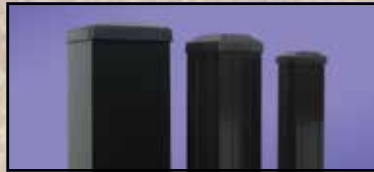
- WALK GATE SPECIFICATIONS - MATCHING GATE SYSTEM



U-FRAME GATE



POOL GATE shown with arch option



Gate Posts
6" 4" 2 1/2"

<p>Gate Heights: 48", 54", 60", 72" Gate Widths: 36", 42", 48", 60", 72" Top & Mid Rails: 1 1/2" (.100") w x 1 1/2" (.100") h Bottom Rail: 1 1/2" w x 3" h (.125") Side Rails: 1 1/2" x 1 1/2" (.125") Pickets: 1" x 1" (.062") Picket Spacing: Less than 4" (Divided Evenly to Reach Equal End Spacing) Gate Options: Single Arch, Continuous Arch (for Double Gates), Designer Arch (for Double Gates over 6' Wide)</p>	<p>Gate Heights: 5220 - 54", 5230 - 55"; 5233 - 55" Gate Widths: 36", 42", 48", 60", 72"* Rails: 1 1/2" (.100") w x 1 1/2" (.100") h Side Rails: 1 1/2" x 1 1/2" (.125") Pickets: 1" x 1" (.062") Picket Spacing: Less than 4" (Divided Evenly to Reach Equal End Spacing) Gate Options: Single Arch, Continuous Arch (for Double Gates), Designer Arch (for Double Gates over 6' Wide)</p> <p>* Includes Bracing on Corners.</p>
--	--

**Regis Gates use Non-corrosive Hardware.
Refer to Regis Entry Gates Brochure for Larger Models.**

STANDARD COLORS

AAMA 2604

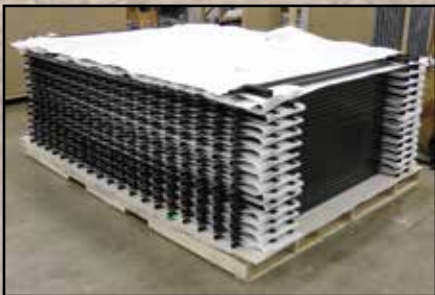
DSI 101 Satin Black	DSI 106 Black Fine Texture	DSI 131 Ninety Bronze	DSI 107 Bronze Fine Texture	DSI 123 White Fine Texture	DSI 104 Gloss Beige	DSI 102 Gloss White	DSI 110 (Optional) Gold Accent Fine Texture
					<p>Note: Color Upgrade available from AAMA 2604 to AAMA 2605.</p> <p>Colors shown are a close representation of the true color. Please consult actual samples for accurate powder coating colors.</p>		
DSI 124 Chocolate	DSI 128 Clay	DSI 121 Speckled Walnut	DSI 122 Sandy Shore	Silver DSI 125			

UPGRADE COLORS

AAMA 2605

DSI 501 (Optional) Satin Black	Special Lead Time DSI 506 (Optional) Black Fine Texture	DSI 507 (Optional) Bronze Fine Texture	Call for Special Price Quote DSI 504 (Optional) Gloss Beige	DSI 502 (Optional) Gloss White	Call for Special Price Quote DSI 510 (Optional) Gold Accent Fine Texture

- SHIPPING AND STORAGE SYSTEM -



All Regis 5000 Series sections are stored on pallets and protected by sheets of foam.



All fence bundles are wrapped in cardboard and built with wood frames for strength



Each bundle is shrink wrapped for protection from weathering.

• SAFE SHIPPING

• CONVENIENT STORAGE

• EASY ACCESS



FEATURES, BENEFITS AND ACCESSORIES

F - 6063-T6: Posts & Rails; 6063-T52: Pickets.
B - Higher Quality Aluminum... A Great Value.

F - Custom Blended Super Durable Polyester TGIC Powder Coating.
B - Verified AAMA 2604-10 Compliance.

F - Verified AAMA 2604-10 Compliance.
B - Premium Architectural Grade Durability.

F - Custom Colors Available.
B - Unlimited Color Choices.

F - Hidden E-Clip Picket Fastener. (Patent #US 7,152,849 B2)
B - No Unsightly Screws!

F - Spear, Quad or Triad Finials.
B - Decorative Choices.

F - Assembled Sections.
B - Saves Time... for Easier Installation.

F - Secure Factory Packaging.
B - Eliminate Freight Damage.

F - Lifetime Limited Warranty.
B - Peace of Mind... Lasts for Decades.

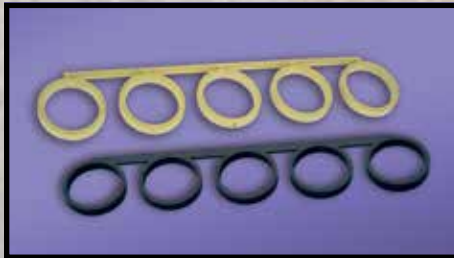
F - Matching Gates with Hardware.
B - Esthetically Pleasing... Easy to Adjust... Can Be Securely Locked.

• Standard Sections - Rack 17" in 8' • 9 Fence Models, 7 Heights, over 12 Standard Colors • Gates - All Rails & Pickets are Welded



POST CAPS

Flat (standard) Ball (optional)



RING KIT

(Optional)



DESIGNER POSTS

6" x 6"

4" x 4"

2 1/2" x 2 1/2"



Aluminum Insert



FINIALS

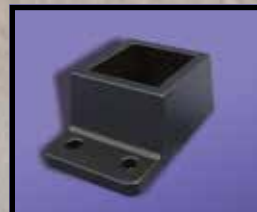
Quad (optional)

Triad (optional)

Spear (standard)



SWIVEL RAIL MOUNT



WALL RAIL MOUNT



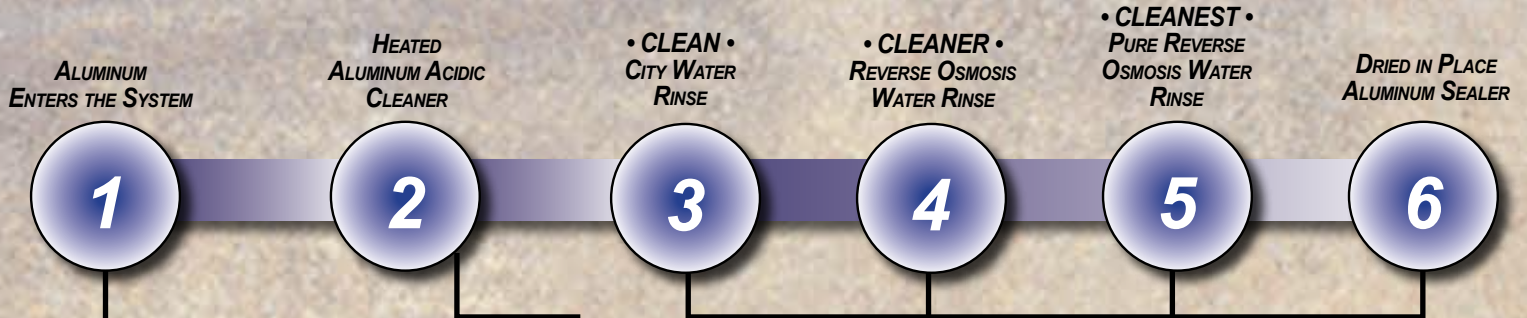
HIDDEN E-CLIP FASTENERS

(Patent #US 7,152,849 B2)

STATE OF THE ART 11-STEP POWDER COATING PROCESS



DSI is a PCI 4000 certified and verified AAMA 2604-10 and AAMA 2605-11 compliant coating applicator. The powder coating process is accredited by the American Architectural Manufacturing Association and the Powder Coating Institute. Our powder coatings are custom blended from a Super Durable Polyester TGIC (Triglycidylisocyanurate) resin base using premium pigmentation to meet AAMA 2604-10 specifications. Our AAMA 2605-11 is a fluorocarbon polymer resin system.



STEP #1: Our raw premium grade aluminum is inspected to be free of blemishes and is not exposed to the outdoor elements.

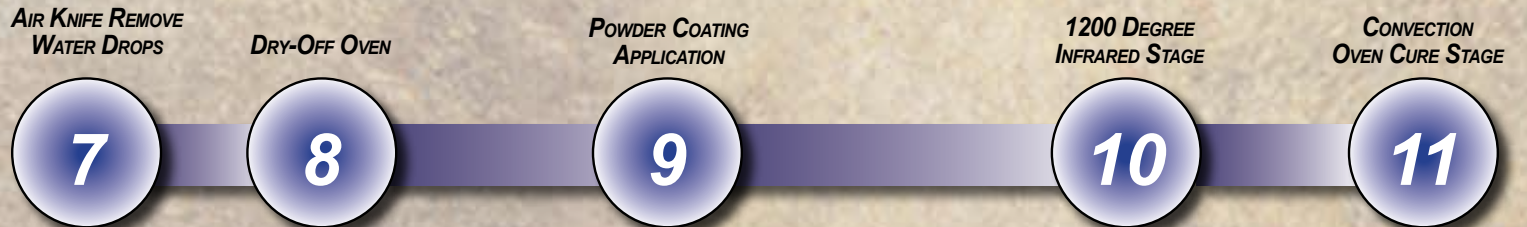


STEP #2: Product enters heated acidic cleaner stage to remove extrusion and fabrication oils.



The next five stages consist of a:

- STEP #3:** (CLEAN) City water rinse,
- STEP #4:** (CLEANER) Recycling reverse osmosis water rinse,
- STEP #5:** (CLEANEST) Pure reverse osmosis water rinse,
- STEP #6:** (SEALER) Dried in place aluminum sealer.



STEP #7: A 200 MPH air blast removes water drops from the pre-treated product.

STEP #8: A convection oven completes the dry-off process.



STEP #9: Powder application is applied with 12 automated guns. Compressed process air is dried to -35°F Dew Point for superior adhesion and aesthetics. The powder booth contains powder coating overspray with no emissions to the surrounding environment.



STEP #10: Quickly brings the powder coating and substrate to cure temperature for the gel cure stage.



STEP #11: The final step of the powder coating process is the 400 degree cure stage, bonding and adhering the powder coating to the aluminum substrate.

Ten pre-treat system titration checks twice per shift maintain system parameters and ten QC checks are completed every hour on product coming off the production line.

Parts are not touched by human hands during the pre-treat, dry-off, application, and cure process to maintain ultimate cleanliness of parts to be coated.





SPECIFICATIONS & POWDER COATING TECHNICAL DATA

Styles:	5131	5132	5141	5142	5220	5230	5233	5240	5243
Fence Heights:									
48"	◆	◆				◆	◆		
54"	◆	◆			◆				
55"						◆	◆		
60"	◆	◆				◆	◆		
72"	◆	◆				◆	◆		
84"			◆	◆				◆	◆
96"			◆	◆				◆	◆
Section Length:									
8' Centers	◆	◆	◆	◆	◆	◆	◆	◆	◆
Standard Posts:									
2 1/2" x 2 1/2" (.090")	◆	◆			◆	◆	◆		
2 1/2" x 2 1/2" (.125")			◆	◆				◆	◆
Heavy Duty Posts:									
2 1/2" x 2 1/2" (.125")	◆	◆			◆	◆	◆		
Gate Posts:									
2 1/2" x 2 1/2" (.125")	◆	◆	◆	◆	◆	◆	◆	◆	◆
4" x 4" (.125")	◆	◆	◆	◆	◆	◆	◆	◆	◆
6" x 6" (.185")	◆	◆	◆	◆	◆	◆	◆	◆	◆
Post Caps:									
Flat (Standard) 2 1/2", 4", 6"	◆	◆	◆	◆	◆	◆	◆	◆	◆
Ball (Optional) 2 1/2", 4"	◆	◆	◆	◆	◆	◆	◆	◆	◆
Rails:									
1 1/2" (.070") w x 1 1/2" (.095") h	◆	◆	◆	◆	◆	◆	◆	◆	◆
Pickets:									
1" x 1" (.062")	◆	◆	◆	◆	◆	◆	◆	◆	◆
Picket Spacing:									
3.750" Between Pickets	◆	◆	◆	◆	◆	◆	◆	◆	◆
Finial Option:									
Triad & Quad	◆	◆	◆	◆			◆		◆
Section Options:									
Ring Kit	◆	◆	◆	◆		◆			◆
Short Picket Option w/Spear	◆	◆	◆	◆					
Short Picket Option w/Finial	◆	◆	◆	◆					
Short Picket Option w/Flat Top						◆	◆	◆	◆

§ Meets National Pool Code Requirements for Height and Spacing. Check Local Pool Code Requirements.



QUV ACCELERATED WEATHERING TESTER

Fluorescent lamps, moisture, and heat provide weathering simulation at an estimated rate of **1000 hours = 1 year** per QUV documentation.



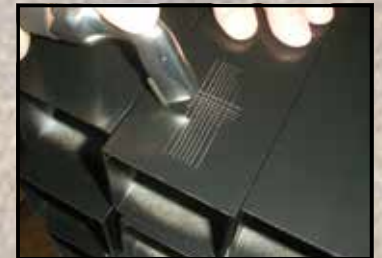
GLOSS TESTER

Measures the gloss level of coating.



COLOR SPECTROMETER

Measures color value per L.a.b. scale shown.



ASTM D3359 CROSSHATCH TEST

Hourly crosshatch testing is completed per ASTM D3359 to test coating adhesion.

Verified AAMA Compliance

Regis Aluminum Fencing is Verified AAMA 2604-10 Compliant

American Architectural Manufacturers Association (AAMA) Performance Requirements For Pigmented Organic Coatings Defined.

AAMA Tests	TYPICAL Polyester TGIC	AAMA 2603	AAMA 2604-10	AAMA 2605-11
• Dry Film Hardness	No test	No coating rupture	No coating rupture	No coating rupture
• Dry Adhesion	No test	10% coating removal	No coating removal	No coating removal
• Wet Adhesion	No test	10% coating removal	No coating removal	No coating removal
• Boiling Water Adhesion	No test	No test	No coating removal	No coating removal
• Impact Resistance	No test	No coating removal	No coating removal	No coating removal
• Abrasion Resistance	No test	No test	ACV 20 minimum *	ACV 40 minimum *
• Muriatic Acid Resistance	No test	No visual change	No visual change	No visual change
• Mortar Resistance	No test	No visual change	No visual change	No visual change
• Nitric Acid	No test	No test	5ΔE max. change	5ΔE max. change
• Detergent Resistance	No test	No visual change	No visual change	No visual change
• Window Cleaner Resistance	No test	No test	No visual change	No visual change
• Humidity Resistance	No test	1500 hours	3000 hours	4000 hours
• Salt Spray Resistance	No test	1500 hours **	3000 hours **	4000 hours **
• Color Retention (S. FL)	No test	1 year minimum fade	5 years max. 5ΔE change	10 years max. 5ΔE change
• Gloss Retention	No test	No test	5 year 30% retention	10 year 50% retention

* Abrasion Coefficient Value

** 0" to 1/16" creepage from scribe is passing

CSI 3-Part Specs available at www.diggerspecialties.com

DSI Digger Specialties Inc.
www.diggerspecialties.com

AFA
POWDER TOUGH COATED
PCI 4000 HOURS
AAMA
Manufacturer of Verified Components

S O L D B Y :